

BEST

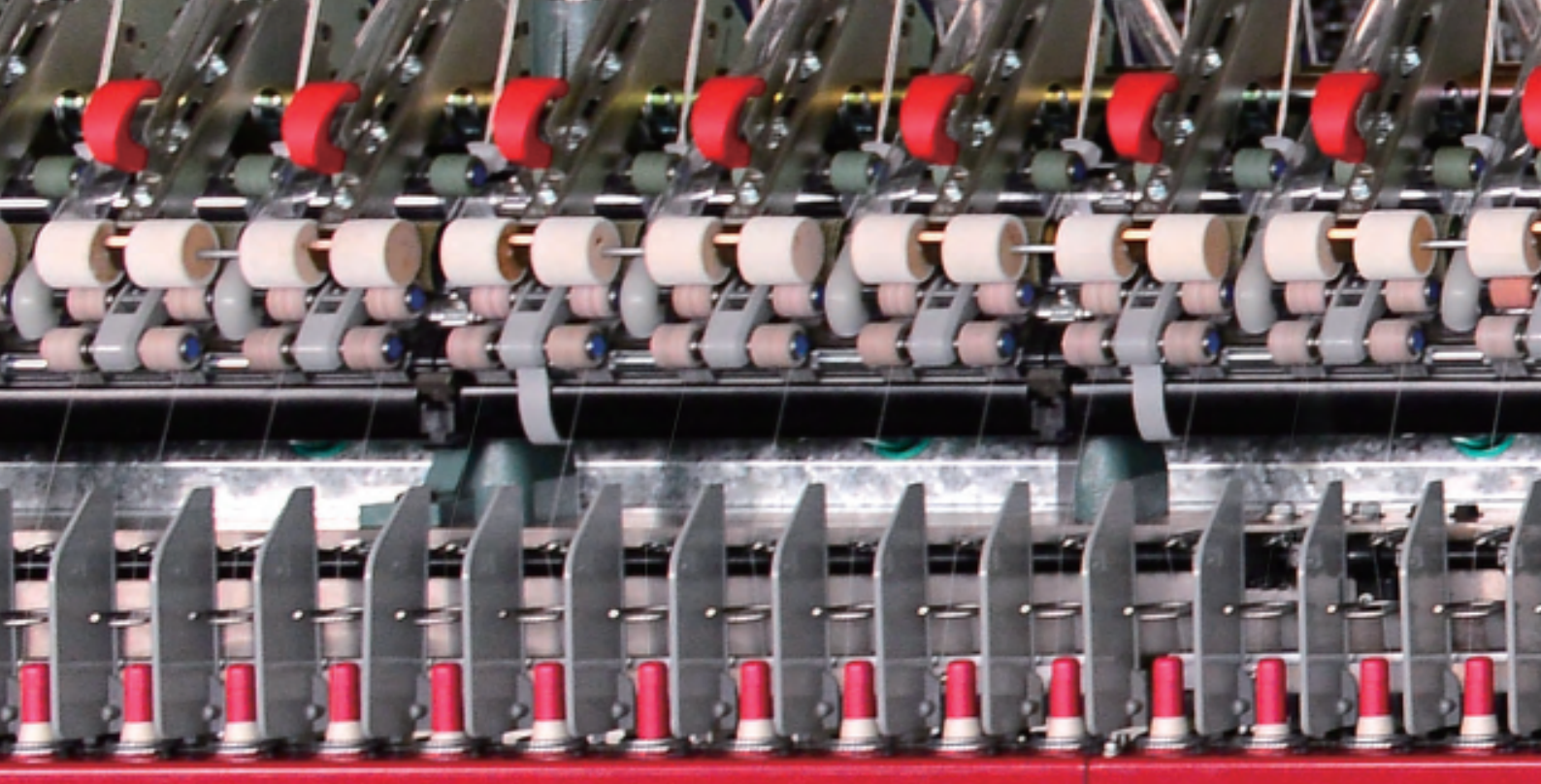


紧密纺细纱机

COMPACT RING SPINNING FRAME



贝斯特机械制造有限公司
BEST MACHINERY COMPANY LTD.

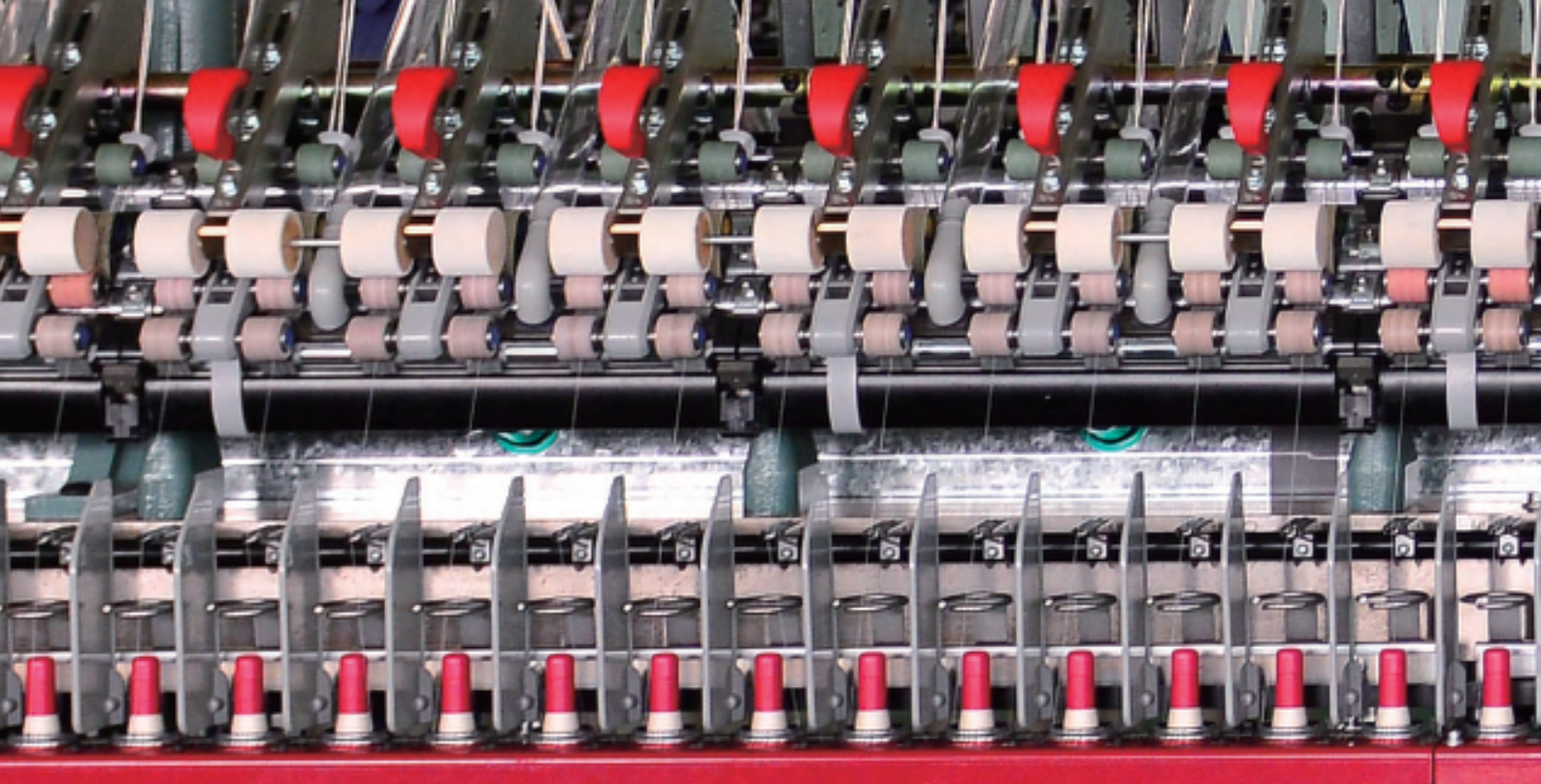


COMPACT RING SPINNING FRAME

紧密纺细纱机

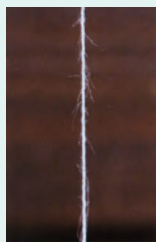
紧密纺装置的效果

- 纱线质量指标: 在相同工艺条件下与普通环锭纺相比,3mm 毛羽下降 70%、强力提高 10%、条干改善 0.2% 左右。
- 纺纱经济指数: 提高纤维材料的利用率,降低捻度 10% 左右、断头率降低 60% 左右,飞花减少。
- 络筒工序: 提高落纱速度与稳定性。
- 倍捻工序: 降低捻度 20% 左右。
- 织造工序: 提高效率 15% ~ 30%、减少浆用量 20% ~ 40%。
- 针织工序: 降低针的磨损与上蜡量,且单纱可代替股纱。
- 织物整理工序: 减少或无需烧毛工艺。
- 制成品: 提高织物强度与光泽、降低起球率、纹路清晰手感舒适。

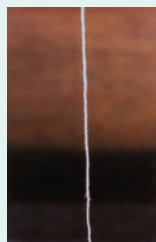


EFFICIENCY OF THE COMPACT SPINNING SYSTEM

- Yarn quality: compare to the conventional ring spinning frame under the same spinning process, 3mm hairiness decreases by 70% , yarn strength increases by 10% and evenness CV% improves about 0.2%.
- Spinning economics: improve fibers utilization rate, decrease twist about 10% , reduce ends breakage about 60%, reduce fly.
- Winding process: improve winding speed and stability.
- 2-for-1 twisting process: reduce twist about 20%.
- Weaving process: improve efficiency by 15– 30% ,reduce sizing by 20–40%.
- Knitting process: reduce needle worn out and waxing amount, single yarn can take place of double one.
- Fabric finishing process: reduce or no need singeing at all.
- Finished products: improve the fabrics strength and gloss as well; decrease the rate of balling up, and the stripe weaving is clear, it is comfortable by hand feeling.



普通环锭纺纱线
Normal ring yarn



紧密纺纱线
Compact yarn



普通环锭纺管纱
Normal ring bobbin yarn



紧密纺管纱
Compact ring bobbin yarn

贝斯特四罗拉负压式紧密纺装置

BEST 4-ROLLER VACUUM TYPE COMPACT SPINNING SYSTEM



原 理 Principle

在原环锭纺纱技术的基础上增加集聚装置,纤维须条经过主牵伸后,在进入加捻区前首先经过负压集聚区,从而消除了加捻三角区,使纤维须条向纱干集聚,从而减少毛羽。

Based on the technology of conventional ring spinning frame, add a new condensing device on it. The fibers shall firstly pass the vacuum condensing area after the main drafting, but before going into the twisting area, so that the twisting triangle area has been deleted and the fibers shall condense themselves into the main yarn, therefore reduce the hairiness.

结 构 Structure

- 在原环锭纺主牵伸区前增加集聚装置用于纱线的集聚和加捻三角区的消除。
- 增加负压系统,为纱线集聚提供所需负压。
- 增加电气控制部分,控制紧密纺负压风机等其它零部件的运行。
- Adding a condensing device before the main drafting area for the yarn condensing and deleting the twisting triangle area.
- Adding a vacuum system for yarn condensing which needs vacuum.
- Adding an electric control system for controlling compact spinning system vacuum fan and other components running.



特点 Feature

- 适用于棉纺、毛纺细纱机的改造,可纺精梳纱、普梳纱、低支纱以及赛络纺、竹节纱。
 - 紧密纺零部件的自制率达到90%以上,确保产品制造质量一致性、可靠性、稳定性。
 - 采用双吸风管专利技术,实现负压差异优于国内外同类产品。
 - 采用独特的集聚纺纱装置张力支撑机构。确保网格圈张力一致、运转平稳,张力架支杆可翻转结构方便了网格圈的拆装,整体不锈钢结构延长了使用寿命,提高了运行可靠性。
 - 采用新型集聚纺纱装置分体化异形管。集聚罗拉与异形管分体化组装,保证集聚区组件运行的稳定性和可靠性,使用寿命长、数据稳定。维修方便,使用成本低。
 - 可选配的用于紧密纺负压仓的纤维自动清理装置,可对负压仓内的短绒及时清理,保证整个纺纱过程中负压一致均匀,减少纱线毛羽锭间差异。
 - 采用紧密纺可调笛管支架,当一节笛管中的某一个吸气孔被堵时,可在不影响其它锭子正常纺纱的情况下进行清理,减少了断头带来的纱线质量不稳定,降低了操作工劳动强度。
- It is applied for modernizing cotton and wool type fibers ring spinning frames, which can spin for combed yarn, carded yarn, coarse yarn, Siro spun yarn and slubby yarn.
 - More than 90% parts of the compact spinning system are manufactured by the Company itself, to ensure the parts quality, uniformity, reliability and stability.
 - The patent technology double suction pipe has been applied to apply for vacuum differences, which is better than that of the others.
 - The unique tensioning system for condensing spinning device has been applied to ensure that the mesh aprons tension is uniformity, the tension bar can be turned over, which is convenient for setting up and taking down for the mesh aprons, and it is made of stainless steel by whole, which can service long life and improve the running reliability.
 - The new type of shaped pipe has been applied for the condensing spinning device, which is a separate part from it. The small roller is separate from the shaped pipe, they can be assembled separately to ensure that the parts in the condensing area can run steadily and reliably, long service life and all data are stable. It is easy for maintenance and low cost.
 - The Auto- cleaning system for cleaning fibers in the vacuum box for compact spinning system is an optional device, which can clean short fibers in the vacuum box in time to ensure that the vacuum is kept in uniformity in the whole spinning operation, and to reduce yarn hairiness differences between spindles.
 - The adjustable bracket for suction flute in the compact spinning system has been applied. When one hole of the piece of the suction flute is jammed, just clean it alone without affecting adjacent spindles running, so that the yarn quality can be ensured and reduce the operators working intensity.

贝斯特四罗拉负压式紧密纺装置

BEST 4-ROLLER VACUUM TYPE COMPACT SPINNING SYSTEM

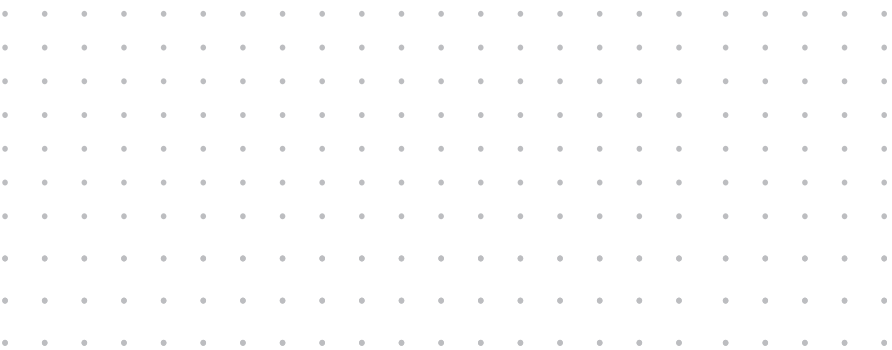


主要部件 The Main Parts

- 集聚区组件: 带齿前罗拉部件, 异形管部件, 过桥齿轮部件, 笛管部件, 罗拉座部件, 皮辊架, 控制皮辊等。
 - 风机箱组件: 风机箱, 负压风机, 风机座, 自动清花装置及负压检测装置等。
 - 风道组件: 风道接套, 上风道尾段, 上风道中段, 上风道头段, 上风道连接卡箍等。
 - 电控箱组件: 电控箱, 变频器, 空气开关, 时间继电器等。
 - 落纱定位装置: 支架, 手柄, 档杆等。
 - 环锭纺还原装置: 笛管还原座, 可调笛管支架。
- Condensing zone part: front roller with teeth, shaped pipe compound, carrier gear compound, flute compound, roller stand compound, top roller bracket compound and control top roller compound and etc.
 - Suction box part: fan box compound, vacuum fan compound, fan base compound, auto-cleaning system and vacuum monitoring system.
 - Suction duct part: duct connector, off-end section for upper duct, middle section for upper duct, head-end section for upper duct and upper duct connecting clamp and etc.
 - Electric part: electric cabinet, inverter, air breaker, time relay and etc.
 - Positioning device for doffing: bracket, handle and bar.
 - Returning back to conventional ring spinning system: flute bracket and adjustable bracket.

环境要求 Environment Requirement

- 车间温度 27℃ ~ 33℃
 - 相对湿度: 50% ~ 60%
 - 空气含尘浓度小于 1.0mg/m³
- Workshop temperature: 27℃-33℃;
 - Relative humidity: 50-60%;
 - Dust content in the air must be less than 1.0mg/m³.



•

•

•

•

•

•

•

•

•

•

•

•

•

•

•

•

•

•

•

•

•

•

•

•

•

•

•

•

•

•

•

•

•

•

•

•

•

•

•

•

•

•

•

•

•

需求引领创新 / 品质成就卓越

DEMAND LEADS INNOVATION / QUALITY ACHIEVES EXCELLENCE



贝斯特紧密纺自制关键部件

THE COMPACT SPINNING SYSTEM KEY

PARTS MANUFACTURED BY BEST COMPANY ITSELF

紧密纺专用罗拉

Special rollers for compact spinning system



在东杰新一代罗拉加工工艺的基础上,引进高性能数控磨齿机,高精度滚齿机,高精度珩齿机加工紧密纺专用带齿罗拉,确保各尺寸的精度与表面质量。

Based on the Dongjie Company's new generation roller processing production line, we have invested to introduce high performance CNC gear grinding machine, high precision hobbing machine and gear honing machine to produce the special fluted rollers for compact spinning system and ensure all measure precisions and surface quality.

网格圈

mesh apron



采用进口优质尼龙涂碳长丝,结合独创的织造工艺流程,引进先进的高效织机,数控定型切割设备全程自制网格圈,采用先进的网格圈检测设备与试验设备,确保网格圈的质量。可根据用户需求定制与各类国内外主机相配的网格圈。张力架部件采用不锈钢材料制造,强度高,导电性好,耐磨损,寿命长。

Mesh apron is made of imported superior nylon coated by carbon with the unique weaving processing program and high efficiency loom, and the CNC shaped cutting machine automatically produces the apron, and the advanced inspecting and testing instruments ensure mesh apron quality. Various types of mesh aprons fitted with both foreign and China made frames could be specially produced according to customers need. The tensioner is made of stainless steel with high strength, perfect conductivity, wearing resistance and long lifetime.

过桥齿轮

Carrier gear



采用高强度自润滑高分子材料和精密模具制造过桥齿轮,精度一致性好,噪声小,耐磨损,可延长前罗拉与小罗拉的使用寿命。

Carrier gear is made of high molecular material, which can be self lubricated with high intensity. It is manufactured by means of precise die mould; its precision is highly uniformity, noiseless and wearing resistance, which can prolong both the front roller and mini-roller service life.

异形管

Shaped pipe compound

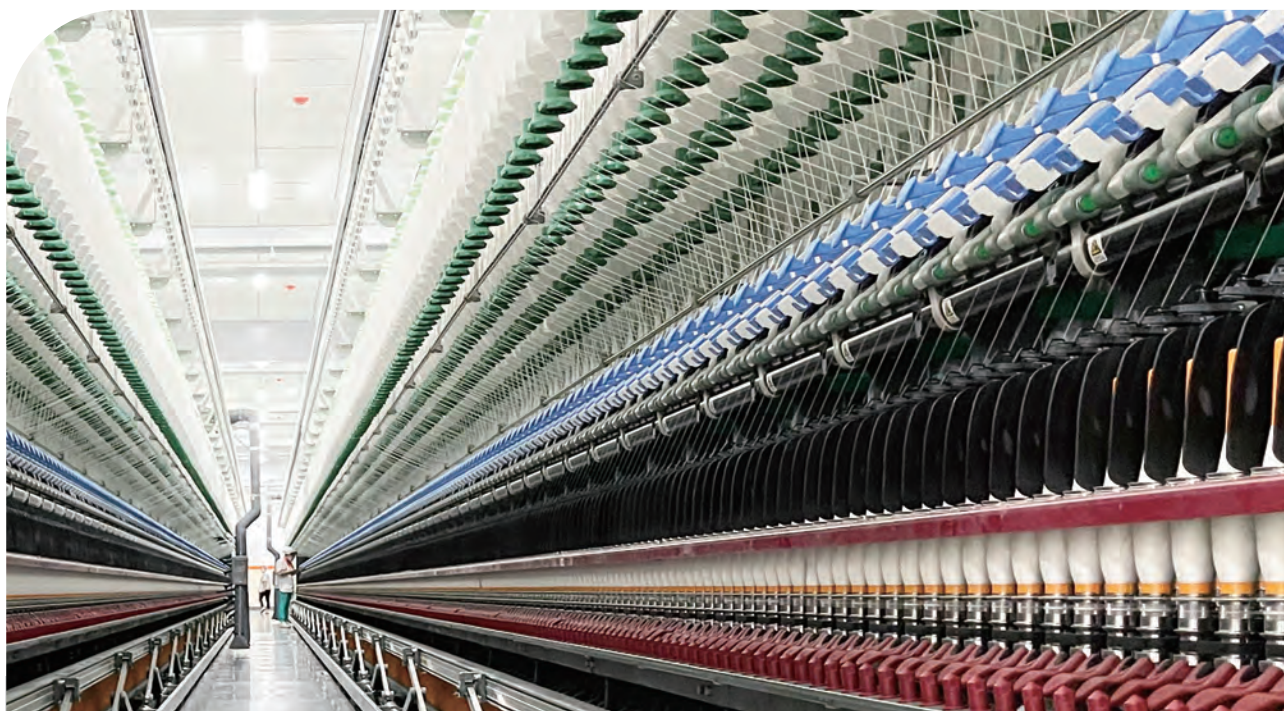


进口加工中心生产线制造,确保各尺寸加工精度与一致性;具有自主知识产权的独特的异形管结构,更能降低毛羽指数,提高纱线强力。异形管表面经特殊处理,光洁耐磨,可延长网格圈的使用寿命。

It is manufactured by imported machining center, which can ensure all measure precisions and uniformity. The Company has the Patent right to produce it with the unique shaped pipe structure. It can help reducing hairiness and improving yarn strength. The shaped pipe surface is specially treated, which is smooth and wearing resistance to prolong the mesh apron lifetime.

贝斯特紧密纺自制关键部件

COMPACT KEY PARTS MANUFACTURED BY BEST
COMPANY ITSELF



皮辊架 罗拉座 Top roller bracket and roller stand

- 引进先进的塑料加工设备与检验设备,采用国内外名牌原材料确保产品的强度、抗静电性、一致性以及使用寿命。
- 罗拉座采用高密度材料,进口加工中心制造,精度高,强度好。
- Top roller bracket is made of well known brand materials in the world and is manufactured by imported plastic molding machines and inspected by imported instrument. The bracket can ensure high strength, anti-static electricity, high uniformity and service life as well.
- Roller stand is made of high density material and is manufactured by imported machining center line with high precision.



DEMAND LEADS INNOVATION / QUALITY ACHIEVES EXCELLENCE

- 车头强化设计,更适应紧密纺需求。
- 电气部分一体设计故障率低,维修方便。
- 统一安装售后。

-
- A close-up view of a textile spinning machine, showing multiple spindles with white bobbins and red caps, and blue bobbins with white threads, arranged in rows.

为您提供物超所值的设备与服务

PROVIDE HIGH-QUALITY EQUIPMENT AT
REASONABLE PRICE AND BEST SERVICES.



地址 Add: 山西省晋中市榆次区经纬南路599号
599 Jingwei South Road. Yuci District, Jinzhong
City, Shanxi Province



电话 Tel : 0086-354-3995888 3995856



传真 Fax : 0086-354-3995866



邮箱 E-mail : best-xiaoshou@163.com



邮编 Post : 030600



BEST FOR THE BEST 贝斯特追求卓越/铸就不凡

